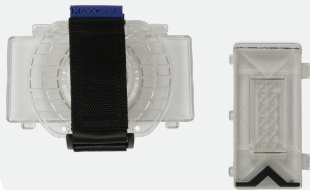




Installation Instructions

- 1 Remove the external silicone sleeve by peeling it away from the internal hard case.
- 2 Gently apply pressure to the small clips (as indicated by the arrows) and unclip all four sides. Once all the sides are unclipped, the internal hard case will open.
- 3 Insert the iPad into the rear cover.
- 4 When the iPad is securely positioned inside the rear cover, place the internal front cover on top and gently clip all four sides into position.
- 5 Reinstall the external silicone rubber sleeve.
- 6 The built-in kickstand can be replaced with a hand strap (sold separately).
***To remove the kickstand, undo both latches on the right side. Insert the hand strap in the same position and press until it clicks.*
- 7 Your iPad is now ruggedly-protected and ready to use!



Having trouble?

We're here to help! You may not have the correct case for your device. Please contact our U.S. based support staff and we'll be happy to troubleshoot and make sure you have the correct case to meet your needs. Call (888) 799-6837 or email support@maxcases.com. 