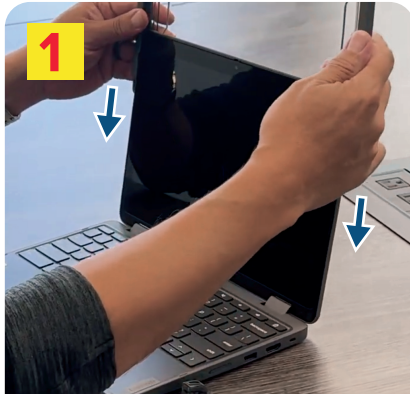


Extreme Shell-F3

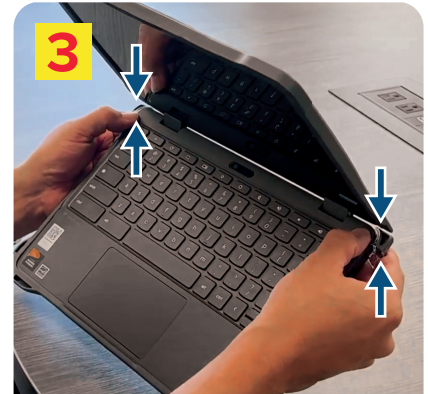
Turn over for important instructions on removing the case



1 Hold the top piece above the device screen and align the lip of the case with the device. Next, push down gently to slide the lip of the case around the sides of the screen. When you cannot slide it any further, the case is successfully attached.



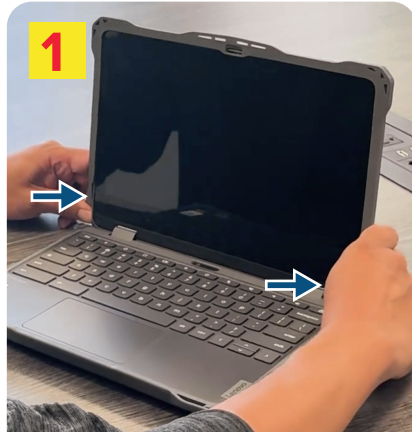
2 Repeat the process for the bottom piece, sliding the case onto the device until it is completely on.



3 Locate the two clips on the back of the bottom piece. Pop them up to lock the case onto the device securely.

NOTE: If you're using the optional hand strap, you may find it easier to add it before installing the case. To add the strap, thread it through the four cutouts found on both the top and bottom pieces.

Extreme Shell-F3



1

Carefully push the bottom corners out **slightly**. Next, slowly slide the top upwards to loosen it.



2

Hold top case on both sides and steadily slide it up and completely off the device.



3a



3b

To remove the bottom piece, first (a) open the clips on the back corners. Next, (b) slowly and steadily slide the case off.